



3.19

# Pressure sequence valve direct operated

Type ZDZ6DP-L1X

Size (NG) 6  
Up to 250 bar  
Up to 60 L/min



## Contents

Function and configuration	02
Symbols	02
Ordering code	02
Technical data	02
Unit dimensions	03

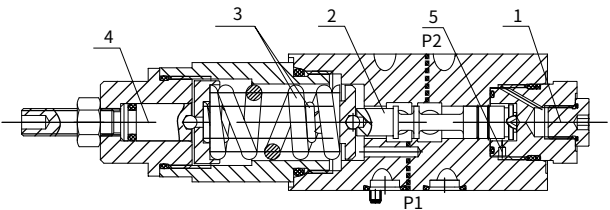
## Features

- Sub-plate mounting
- Mounting face conforms to  
DIN24340 A and ISO4401
- Poit option pressure gauge

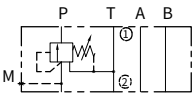
# Function and configuration

ZDZ6D valve is direct-acting sequence valve related to the pressure of the secondary loop, with sequence pressure set through the pressure adjusting mechanism (4); 2 pressure adjusting springs (3) hold the control valve element (2) in initial position and the valve is closed. Pressure of oil port P1 acts on the valve element end face via control channel (5), get balanced each other with the spring force of the slide valve. If the pressure of oil port P1 is over the setting of the spring (3), valve element (2) moves in direction to the spring to open oil port P, so that oil flows from P1 to P2.

Pressure gauge interface (1), a pressure gauge can be installed to monitor the pressure of the sequence oil route.



## symbol



- ① =valve side;
- ② =bottom plate side

# Ordering code

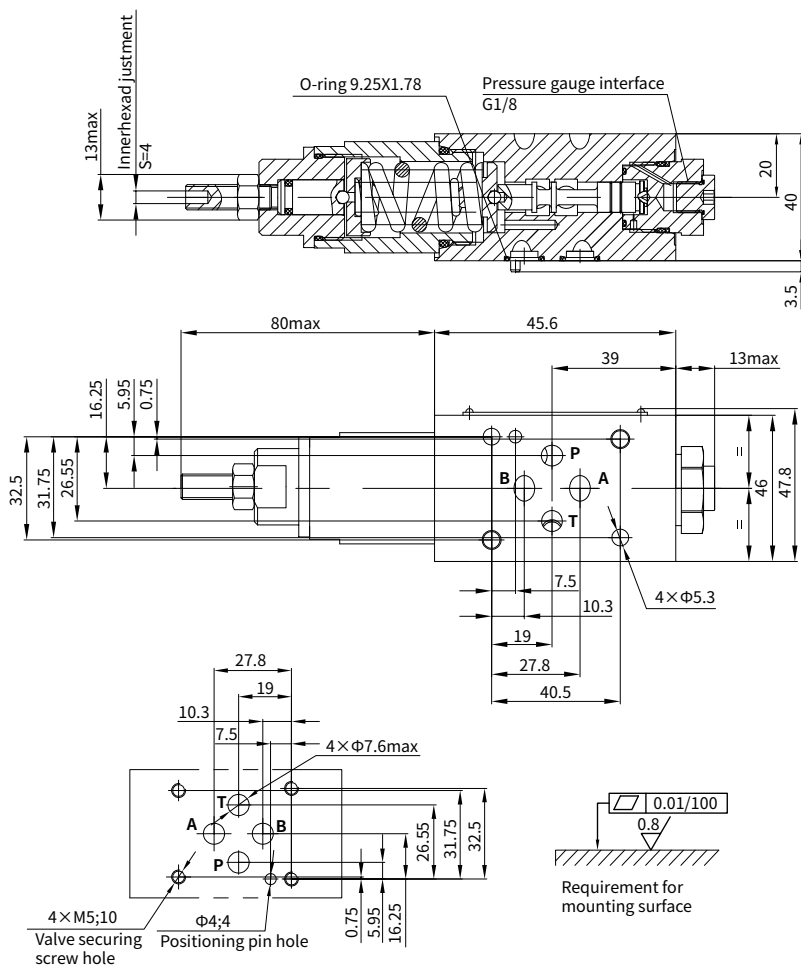
	Z	DZ	6	D	P	2 – L1X	/	25 – B	*	
Superposition structure =Z										Further details in clear text
Sequence valve =DZ								B=		Pressure measurement port thread G1/8
Diameter 6 =6										
Direct-acting type =D								25=		Pressure adjustment range 20~250bar
Oil port P sequence =P										
Screw adjustment =2										
							L1X=			Series L10 to L19 (L10 to L19: unchanged installation and connection dimensions)

# Technical data

Fluid		Mineral oil suitable for NBR and FKM seal	
		Phosphate ester for FKM seal	
Fluid temperature range		°C	-30 to +80 (NBR seal)
			-20 to +80 (FKM seal)
Viscosity range		mm <sup>2</sup> /s	10 to 800
Degree of contamination		Maximum permissible degree of fluid contamination: Class 9. NAS 1638 or 20/18/15, ISO4406	
Max operation pressure (input)		bar	315
Highest order pressure setting		bar	250
Min. initial pressure		bar	20
Max flow		L/min	60
Weight		kg	About 1.3

## Unit dimensions

(Dimensions in mm)



## Valve securing screw

M5 as per GB/T70.1-10.9 grade, Length determined with regard to height  
 Tightening torque  $M_A=8.9\text{Nm}$ , Order must be placed separately