



8.3

Pressure gauge isolator valve

Type AF 6...L3X

Size 6
up to 315 bar



Contents

| | |
|----------------------------|----|
| Function and configuration | 02 |
| Installation examples | 02 |
| Ordering code | 03 |
| Technical data | 03 |
| Unit dimensions | 04 |

Features

- 3-way spool valve
- For sub-plate mounting
- For threaded connections
- Push button operated

Function and configuration

Pressure gauge isolator valves type AF 6 are 3-way spool valves for manual operation.

They serve to monitor the prevailing operating pressure.

The valves basically consist of housing (1), spool (2), compress spring (3), push button (4) .

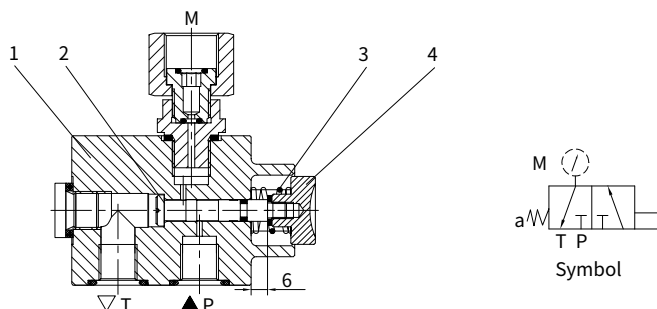
It has two switched positions as well as spring return to the initial position.

In the initial position, flow from P to the pressure gauge via the spool (2) is blocked and the pressure gauge is connected with channel T.

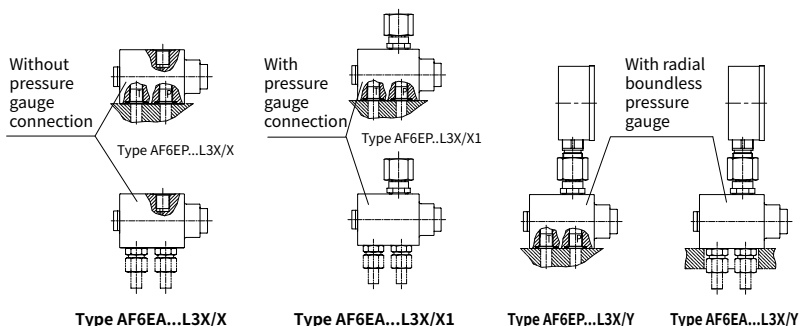
When the button (4) is pushed, the spool (2), is moved into the switched position, giving free flow from P to the pressure gauge and the connection to T is blocked. After operation, the spool (2) is pushed back into the initial position by the compress spring (3) and thereby unloads the pressure gauge.

The valve is available for sub-plate mounting or threaded connections.

The pressure gauge can be directly screwed in to the valve housing or fitted separately (see installation examples).

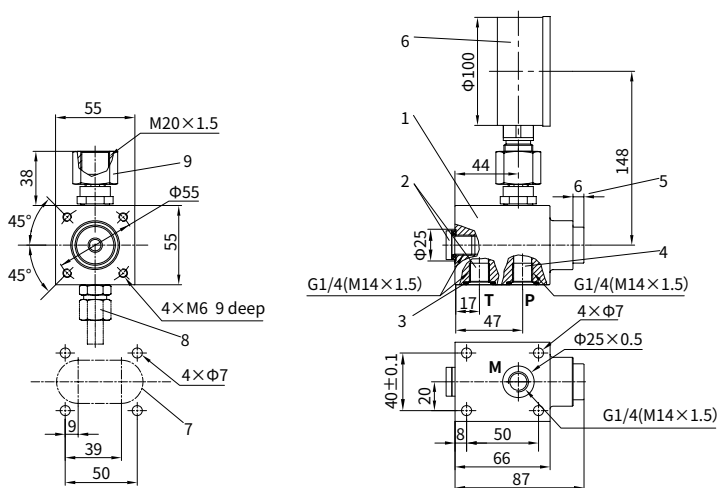


Installation examples

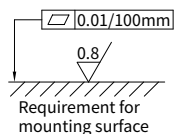


Unit dimensions

(Dimensions in mm)



- 1 Pressure gauge isolator valve
- 2 Tank port, optional
- 3 O-ring 20×2.65 (for plate-type connection)
- 4 Pressure port (pump)
- 5 Push button, stroke 6 mm
- 6 Pressure gauge diameter 100mm
- 7 Panel cut-out
- 8 Connectors (out of the supplying scop)
- 9 Pressure connections



China

+86 400 101 8889

America

+01 630 995 3674

Germany

+49 172 3683463

Japan

+81 03 6809 1696



© This brochure can be reproduced, edited, reproduced or transmitted electronically without the authorization of Hengli Hydraulic Company. Due to the continuous development of the product, the information in this brochure is not specific to the specific conditions or applicability of the industry, thus, Hengli does not take any responsibility for any incomplete or inaccurate description.